

# QM Series

Single-phase electric panels for the protection and control of a 4" single-phase surface pump.

## Specifications

Control through an external contactor

Supply voltage: 1 x 230 V  $\pm 10\%$

Frequency: 50/60 Hz

Power: 0.25 to 2.2 kW

Direct motor starting

Protection: IP54

Ambient temperature: -5 to +40 °C

(limit specified by EN standard 60439-1)

Maximum relative humidity: 50% at +40°C provided that no condensation occurs (limit specified by EN standard 60439-1)

Wall mounted

Metal enclosure

Ready for installation of dry-running control with float or pressure switch (available separately)

Power and thermal overload indicator lights

## Optional accessories

VR1 single-phase varistor module for overvoltage protection (lightning protector)

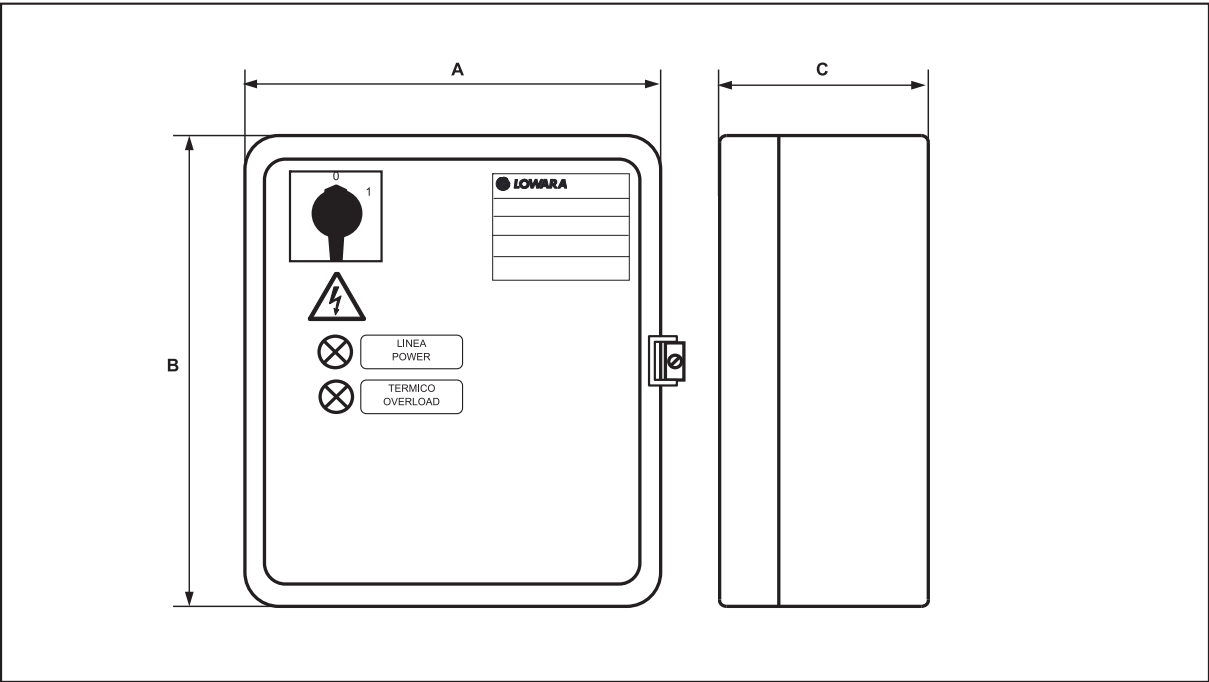
SLD series 24V level kit. Probe module for protection against dry running (set of three electrodes included in the supply)



For proper electric panel-electric pump selection, make sure that the Ampere input of the motor falls within the rated current range shown in the table.

For a complete list of technical information, consult [www.lowara.com](http://www.lowara.com)

# QM SERIES



PANEL TYPE	RATED VOLTAGE V	RATED POWER		RATED CURRENT A	DIMENSIONS			WEIGHT Kg
		kW	HP		A mm	B mm	C mm	
QM/02	1 x 230 V ± 10 %	0,25	0,33	1 ÷ 1,6	235	265	150	5,8
QM/03	1 x 230 V ± 10 %	0,37	0,5	1,6 ÷ 2,5	235	265	150	5,8
QM/05	1 x 230 V ± 10 %	0,55	0,75	2,5 ÷ 4	235	265	150	5,8
QM/07	1 x 230 V ± 10 %	0,75	1	4 ÷ 6,3	235	265	150	5,8
QM/15	1 x 230 V ± 10 %	1,5	2	6,3 ÷ 10	235	265	150	5,8
QM/22	1 x 230 V ± 10 %	2,2	3	10 ÷ 16	235	265	150	5,8

CB-QM\_b\_te